

ABOUT

We are a membership organisation building a thriving community for the arts, with a reputation for the quality and professionalism of its members.

Membership is open to UK and international galleries, art dealers, advisers and curators.

Located in South Kensington, London, our five historic Grade II listed buildings provide a variety of well-proportioned exhibition spaces, viewing rooms, permanent offices, hot desking, art storage combined with technical, logistical and marketing support.

LOCATION

Cromwell Place is situated in the heart of South Kensington's museum district, opposite the Natural History Museum, the Victoria & Albert Museum, and adjacent to South Kensington tube Station. South Kensington is an area with a rich cultural history; originally known as Prince Albert's 'Albertopolis', it developed into one of Europe's most successful cultural hubs during the second half of the 19th Century.

The spirit of Albertopolis continues with exciting new projects at the Victoria and Albert Museum and a growing number of design businesses clustering nearby. As one of London's most vibrant cultural districts and with exceptional transport connections to Heathrow, South Kensington is an ideal location for Cromwell Place to develop a unique cultural destination for collectors and art lovers.

MEMBERSHIP

Cromwell Place welcomes members who have a reputation for honesty, integrity and expertise. Our members believe in the effectiveness of a collaborative approach and will make a contribution to the community we are building.

Membership is open to domestic and international galleries, dealers, advisers and curators, across all specialities, providing applicants can demonstrate a high standard of curatorial and professional competence.

MEMBERSHIP TIERS

RESIDENT

Resident Membership £5,500 (excl. VAT) per annum. For those wishing to maintain a permanent office on site and use the full suite of services available.

EXHIBITING

Exhibiting Membership £5,000 (excl. VAT) per annum. For those wishing to use our services on a regular basis, whilst keeping offices elsewhere in the UK.

INTERNATIONAL

International Membership £3,300 (excl. VAT) per annum. For those whose main gallery/business is not UK based.

NON-EXHIBITING

Non-Exhibiting Membership £2,200 (excl. VAT) per annum. For those working privately and requiring the use of art storage services and viewing rooms.

ONE OFF JOINING FEE

A one off joining fee of £3,300 (excl. VAT) will be payable upon confirmation of membership.

BENEFITS OF MEMBERSHIP

Membership will allow full use of facilities and services, including:

- Flexibility to use membership as befits ambitions of business
- Access to the club room for two directors, as well as up to three guests at any one time
- Access to the art storage facilities and a highly experienced in-house team of art handlers to support hanging of shows, deliveries and packing
- Use of state of the art technology which will aid in planning and managing exhibitions
- Access to a community of international art professionals including museum directors and senior curators
- Networking opportunities with fellow members, curators and collectors
- Access to professional and social events
- Support from the marketing and events teams
- Reduced rates at local businesses
- Use of shower rooms and secure bicycle store

THE MEMBERSHIP COMMITTEE

The Membership Committee meets quarterly and is made up of a selection of our current members who are delegated the authority and responsibility to manage and approve applications for membership.

The Committee serve two-year terms and all members are invited by the Chair.

Applicants who are not accepted can appeal by writing to the Membership Director. Appeals will be heard by the Committee at the following meeting.

Chair, Membership Committee
Georgina Adam

Membership Committee Members
Alexander Gray, Alexander Gray Associates
Guy Sainty, Stair Sainty
Sunny Rahbar, Third Line

HONORARY MEMBERSHIP

Fostering collaboration and creating lasting partnerships with public institutions is an important aspect of Cromwell Place.

As a result, we are offering a limited number of Honorary Memberships for Museum Directors and Senior Curators. As an Honorary member you will have access to the Club Room - the beating heart of Cromwell Place, open daily between 9am-9pm (subject to change). Honorary Members will be able to bring up to three guests at your leisure for meetings, coffee or a light bite.

As part of our public benefit commitment, there will also be opportunities for museums, foundations, project spaces and non-commercial arts organisations to have access to our services at no cost, based on proposals and availability. We are excited to welcome ideas to help shape this important part of our project.

GALLERIES

Each of our 16 gallery spaces has been individually designed to maintain the personality and integrity of the original room, yet discreetly modified to suit the anticipated needs of our members. The galleries are priced depending on size, location and date of hire.

Members will be able to install shows independently, or alternatively, they can use the Cromwell Place in-house technical team for complete or partial installations.

For full specifications and dimensions of each gallery, please refer to floorplans available to download from the website.

OFFICES

Office spaces will be available for Resident Members to relocate their businesses or base their London operation in Cromwell Place. These members will receive priority booking for exhibition space, events and movement of works within Cromwell Place is free of charge (reviewed annually). Residents also benefit from their proximity to the facilities and daily interaction with colleagues and visitors.

VIEWING ROOMS

Viewing rooms with discreet access are suited for showing artworks to collectors in complete privacy. They can be booked in three-hour slots, including morning and evening viewings and can be prepared in advance by our technical team. The rooms can also be used for photography, conservation and cataloguing artworks as well as meeting rooms.

FULLY SERVICED HOTDESK OFFICES AND MEETING ROOMS

For those members requiring a desk on a more temporary basis, there is a dedicated area of 731 sq ft (68 m²) for hot desking, including areas for discreet phone calls and conversations.

CLUB ROOM

Our Club Room offers an iconic mirrored interior where members will be able to meet clients, colleagues, curators and fellow members. This is a space in London for the art community to come together.

A light food and drink offering will be available throughout the day. The Club Room can also be used for talks and discussions as well as intimate dinners (subject to availability).

CATERING SERVICES AND EVENTS

Catering services are available to all members wishing to host dinners, drinks receptions and events in their gallery space during hire.

LOGISTICS AND ART HANDLING

The storage, shipping, and logistical services are a unique feature of Cromwell Place, and the only one of its kind in central London. Our experienced in-house team of art handlers will be available to install exhibitions, arrange deliveries, and organise packing on request. Our 2,000 sq. ft (186 m²) secure storage area and in-house technical team will make installation and set-up an efficient and smooth process.

INSURANCE

Public liability insurance cover will be provided by Cromwell Place for visitors. All insurance cover for artworks and staff must be covered by members.

CONTACT

GENERAL ENQUIRIES
info@cromwellplace.com
+44 (0)20 7052 0811

MEMBERSHIP ENQUIRIES
membership@cromwellplace.com

[Privacy policy](#)

[Terms & Condition](#)

SCHEDULE OF CHARGES

MEMBERSHIP TIERS AND FEES

	RESIDENT	EXHIBITING	INTERNATIONAL	NON-EXHIBITING	HONORARY
JOINING FEE	£3,300	£3,300	£3,300	£3,300	Free
ANNUAL FEE	£5,500	£5,000	£3,300	£2,200	Free
DESCRIPTION	Permanent office on site and use of the full suite of services available.	Use of the facilities on a regular basis, whilst keeping offices elsewhere in the UK.	For those whose main gallery/ business is not UK based.	For those working privately and requiring the use of art storage and viewing rooms.	Museum directors and curators working in the non-commercial and public sector

Prices exclude VAT. Fees are subject to annual review.

GALLERY PRICES

GALLERIES AND PAVILION GALLERY

GALLERY NAME	DIMENSIONS (w x l x h)	TOTAL AREA (ft ²)	TOTAL AREA (m ²)	PRICE - LOW*	PRICE - MEDIUM*	PRICE - HIGH*
Pavilion Gallery	8.1m (w) x 17.7m (l) x 3.6m-4.7m (h)	1543	143	£11,866	£15,723	£20,173
Gallery 1	6.6m (w) x 10.9m (l)x 3.6m (h)	625	58	£4,800	£5,483	£6,414
Gallery 4	4.8m (w) x 10.9m (l)x 3.6m (h)	538	50	£4,138	£5,483	£6,414
Gallery 5	6.8m (w) x 10.9m (l)x 3.6m (h)	625	58	£4,800	£6,360	£7,440
Gallery 6	6.8m (w) x 10.9m (l)x 3.3m (h)	611	57	£3,066	£4,063	£5,484
Gallery 7	4.8m (w) x 10.9m (l)x 3.6m (h)	516	48	£3,972	£5,264	£6,414
Gallery 8	6.8m (w) x 10.9m (l)x 3.6m (h)	635	59	£4,883	£6,470	£7,569
Gallery 9	6.8m (w) x 10.9m (l)x 3.3m (h)	600	56	£3,066	£4,063	£5,484
Gallery 10	4.8m (w) x 5.4m (l) x 3.6m (h)	280	26	£2,152	£2,851	£3,335
Gallery 11	6.7m (w) x 10.6m (l)x 3.6m (h)	818	76	£7,076	£9,435	£10,693
Gallery 12	4.4m (w) x 10.42m (l) x 3.3m (h)	495	46	£1,979	£2,623	£3,762
Gallery 13	6.8m (w) x 10.9m (l)x 3.6m (h)	753	70	£3,012	£3,992	£5,725
Gallery 14 (as of May 2020)	6.8m (w) x 10.5m (l)x 3.6m (h)	776	72	£6,704	£8,939	£10,130
Gallery 15 (as of May 2020)	10.6m (w) x 10.6m (l) x 5.5m-7.4m (h)	1195	111	£11,162	£14,883	£16,868

*Indicative prices, subject to change

OFFICE PRICES

Office spaces are available on five-year occupational licenses and offered to members in a basic shell scheme. Members can design their space as required at their own cost.

OFFICE NAME	DIMENSIONS (w x l x h)	TOTAL AREA (ft ²)	TOTAL AREA (m ²)	ANNUAL RENT*
A	5.3m (w) x 7.6m/2.7m (l) x 2.65m (h)	312	29	£32,683
B	4.35m (w) x 5.35m (l) x 2.65m (h)	247.5	23	£25,921
C	4.35m (w) x 5.35m (l) x 2.65m (h)	247.5	23	£25,921
D	3.25m (w) x 2.99m (l) x 2.46m (h)	97	9	£9,198
E	4.37m (w) x 4.79m (l) x 2.46m (h)	183	17	£17,374
F	4.37m (w) x 4.79m (l) x 2.46m (h)	183	17	Reserved
G	3.25m (w) x 2.90m (l) x 2.46m (h)	97.5	9	Reserved
H	2.17m (w) x 4.25m (l) x 2.64m (h)	97.5	9	£10,143
I	4.48m (w) x 5.55m (l) x 2.64m (h)	269.5	25	£28,175
J	4.52m (w) x 5.14m (l) x 2.64m (h)	247.5	23	£25,921
K	3.32m (w) x 3.53m (l) x 2.46m (h)	118.5	11	£11,242
L	4.63m (w) x 4.97m (l) x 2.46m (h)	194.5	18	£18,396
M	4.61m (w) x 4.51m (l) x 2.46m (h)	226	21	£21,462
N	3.40m (w) x 2.81m (l) x 2.46m (h)	97.5	9	£9,198
O	6.86m (w) x 5.55m (l) x 2.47m (h)	377.5	35	£39,445
P	4.50m (w) x 5.13m (l) x 2.47m (h)	247.5	23	£25,921
Q	2.31m (w) x 2.81m (l) x 2.75m (h)	70	6.5	£6,643
R	4.4m (w) x 5m (l) x 2.75m (h)	237	22	£22,484
S	4.41m (w) x 3.43m (l) x 2.75m (h)	161.5	15	£15,330
T, U & V	T 2.17m (w) x 4.25m (l) x 2.64m (h) U 4.45m (w) x 5.55m (l) x 2.64m (h) V 4.45 (w) x 5.15m (l) x 2.64m (h)	614	57	Reserved
W	4.50m (w) x 5.16m (l) x 2.24m (h)	248	23	£23,506
X	4.50m (w) x 5.12m (l) x 2.24m (h)	248	23	£23,506
Y	2.17m (w) x 4.25m (l) x 2.24m (h)	97	9	£9,198

*In addition to the annual rent, a service charge will be applied.

HOT DESKING	PRICE*
One-off daily charge	£55
Annual regular use(75 day access passes)	£2,800 (individual) £3,500 (shared use)
Monthly dedicated desk	£600
Weekly dedicated desk	£200

*Indicative prices, subject to change.

ART STORAGE PRICES


Our storage, packing, shipping and logistical support are a unique feature of Cromwell Place making it the only facility of its kind in Central London.

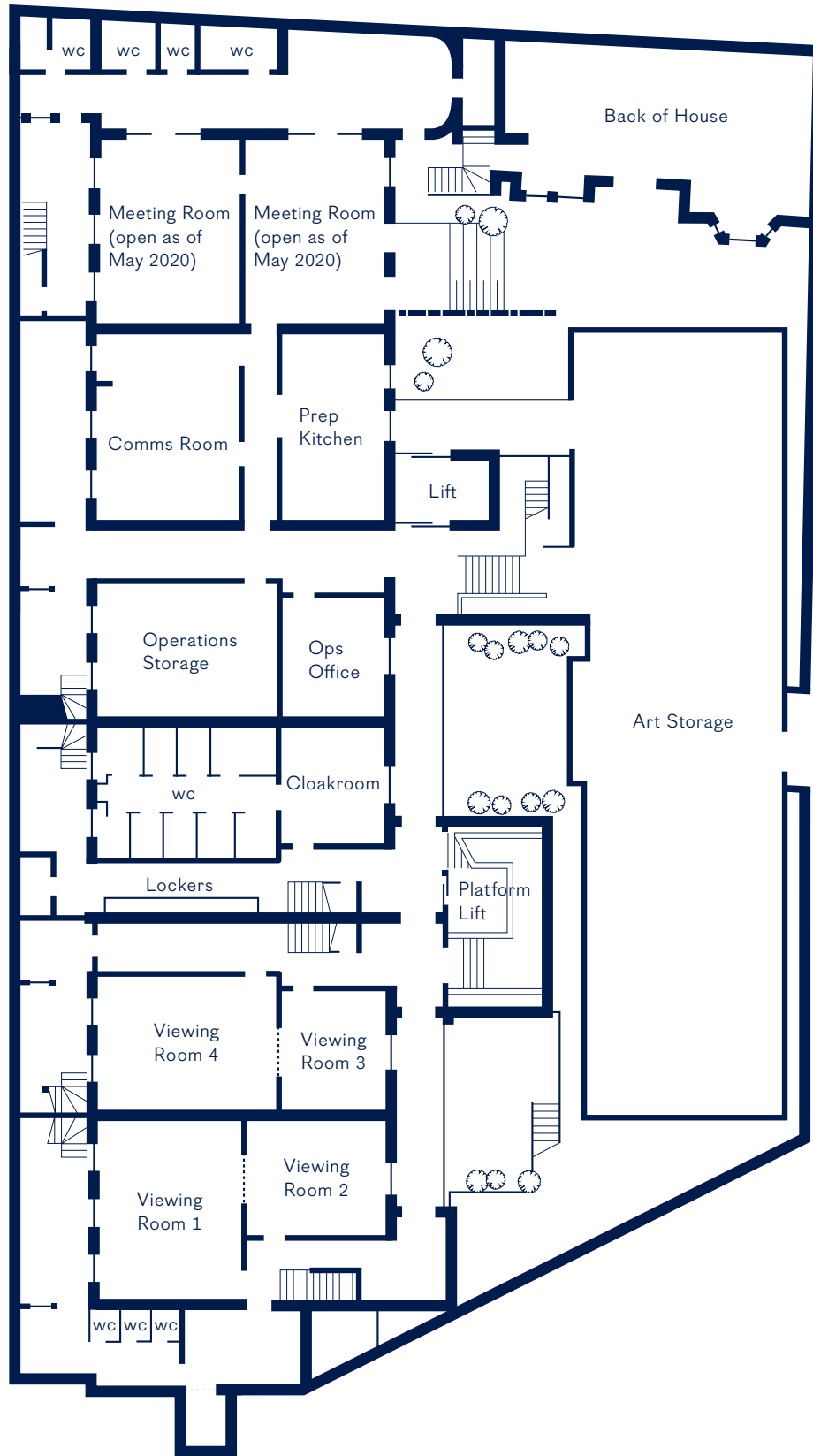
Indicative Pricing schedule for first year of storage, shipping and logistical support

ITEM	PRICE
Weekly on-site art storage	approx. £20 per cubic metre
Weekly off-site art storage	approx. £10 per cubic metre
Deliveries	TBC
Technicians	£50 per hour
Viewing rooms	£250 for 3 hours (morning, afternoon and evenings)

Please note all prices given are indicative. All charges are subject to VAT.

FLOOR PLANS

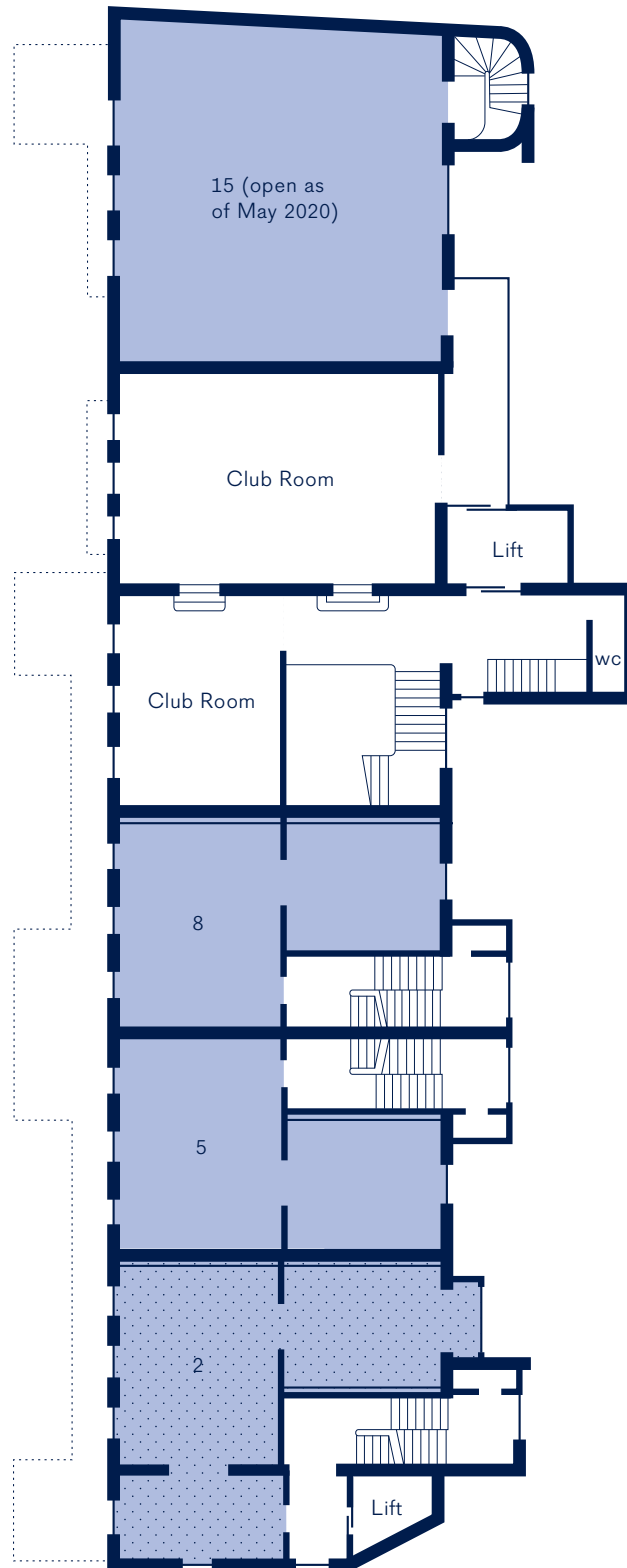
	Gallery		Hanging wall
	Offices		Reserved



LOWER GROUND FLOOR VIEWING ROOMS




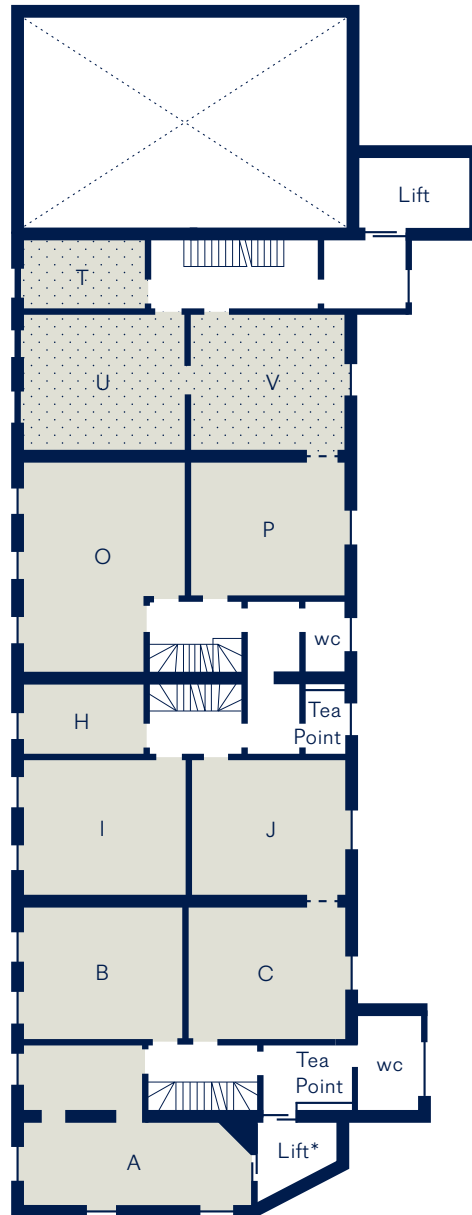
GROUND FLOOR GALLERIES



FIRST FLOOR GALLERIES AND CLUB ROOM



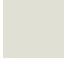



 Interconnected door
for emergency use only

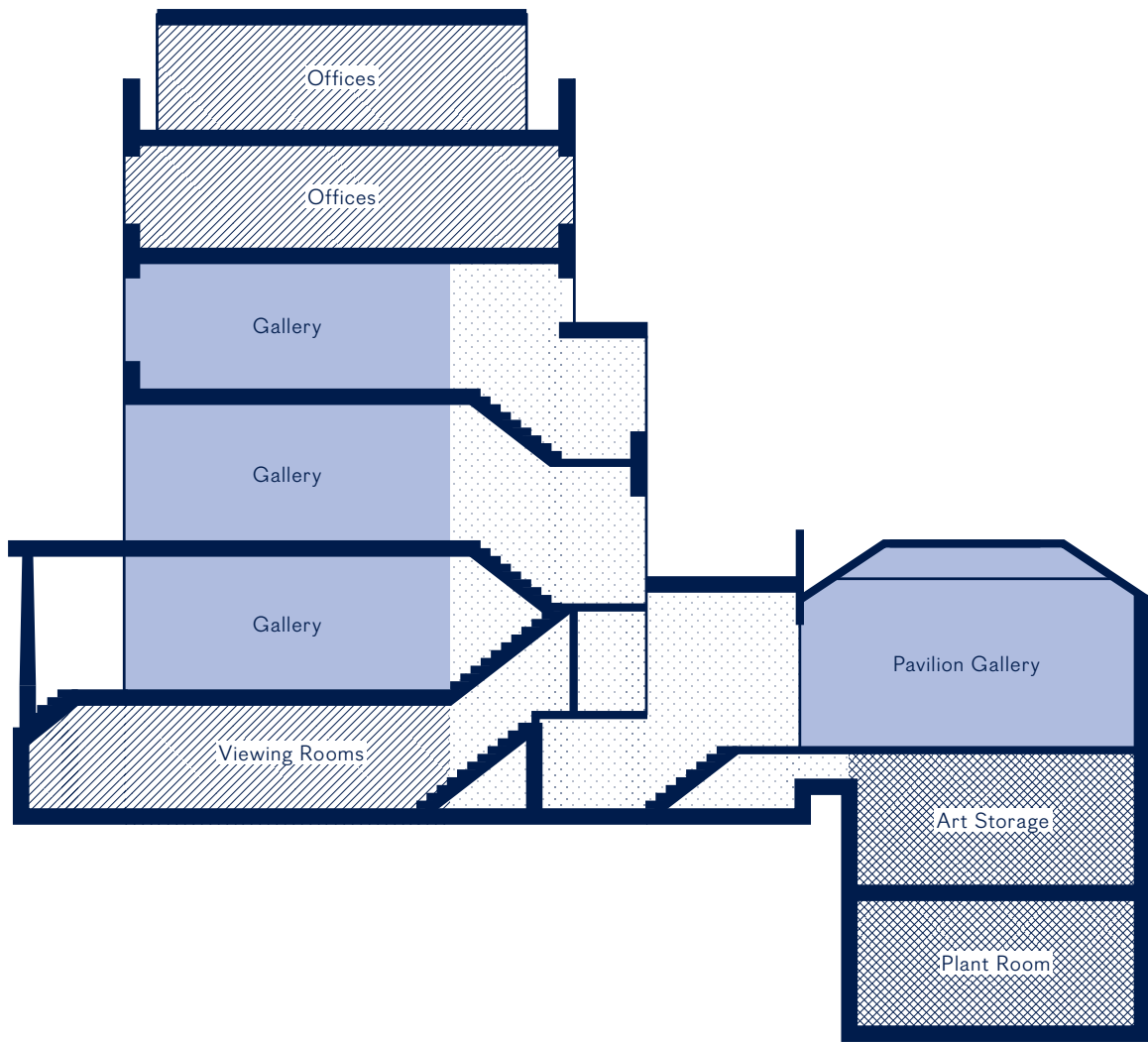


THIRD FLOOR OFFICES

* Lift opening onto main corridor allowing lift access to offices A, B and C. Subject to RBKC planning approval.

-  Gallery
-  Hanging wall
-  Offices
-  Reserved





GALLERY SPECIFICATIONS

Lighting

A complimentary standard light package of Erco wall-washing and spotlights will provide sufficient high quality lighting for the majority of exhibitions.

Additional specialist lighting including framing projectors and six degree spotlights are available for an additional charge, giving galleries complete flexibility in the design of their exhibitions. An in-house technician will be on hand to support install of lights.

Security

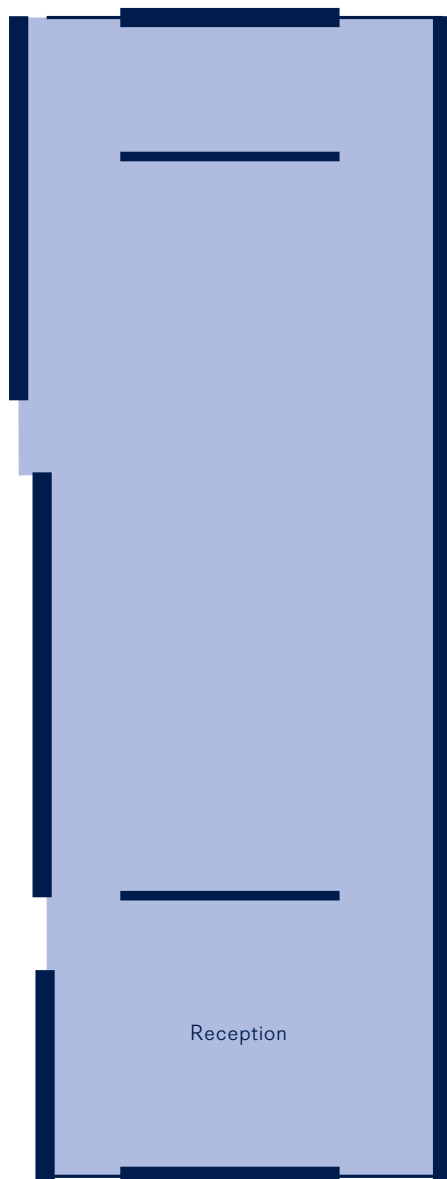
- CCTV: Avigilon™ line of megapixel cameras
- Avigilon H4 HD indoor dome cameras will be installed at key points of the common areas, with clear vision on all gallery entrances
- Electronic Access control
- Intruder Alarm Monitoring
- Personal Attack Alarms in individual galleries will be placed discreetly
- Audio video intercom system

Furniture

A standard desk and chair will be included in each gallery rental. A selection of furniture will be available via our preferred suppliers nearer to the opening of Cromwell Place. This will incur an additional cost.

We reserve the right to change, amend, modify any parts of these Specifications and its accompanying documents, at any time without notice.

PAVILION GALLERY



Dimensions — 8.1m (w) × 17.7m (l) × 3.6m–4.7m (h)

Total Area — 1543 sq ft / 143.37m²

Loading — 4.0 kN/m²

Wall material — 12.5 wall board and one thick layer of ply wood

Wall colour — Neutral

Floor finish — Polished concrete, resin based

Height of doors — 3.6m

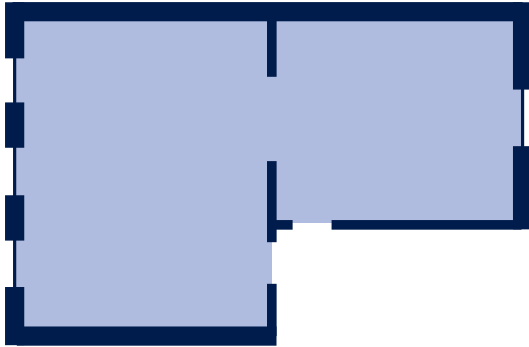
Windows — North facing ceiling windows with black out blinds

Mobility Access — Yes

Access — Unlimited length (within reason) through an opening of 1.6m (w) by 3.6m (h)

GALLERY 1

1 Cromwell Place, Ground Floor



Dimensions — 6.6m (w) × 10.9m (l) × 3.6m (h)

Total Area — 625 sq ft / 58m²

Loading — 2.75 kN/m²

Wall material — Plywood

Wall colour — Neutral

Floor finish — Hardwood timber floor

Height of doors — 2.2m clear opening

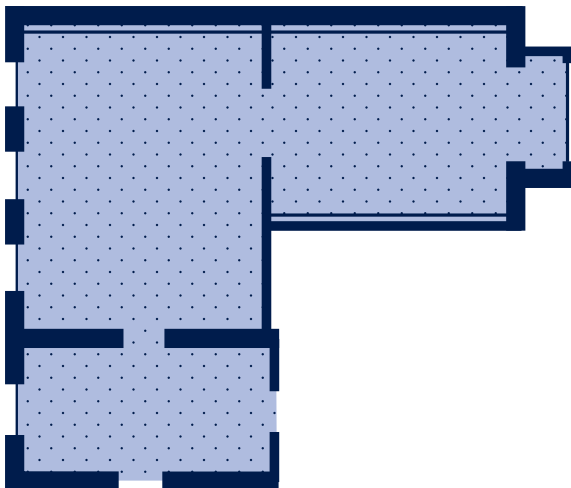
Windows — 4 large windows. All windows are fitted with security locks and screen blinds

Mobility Access — Yes

Lift Access from art storage — 1.6m (w) × 2.65m (h) × 2.1m (h)

GALLERY 2

1 Cromwell Place, First Floor



Dimensions — 9.8m (w) × 10.9m (l) × 3.6m (h)

Total Area — 785 sq ft / 73m²

Loading — 2.75 kN/m²

Wall material — Plywood

Wall colour — Neutral

Floor finish — Hardwood timber floor

Height of doors — 2.2m clear opening

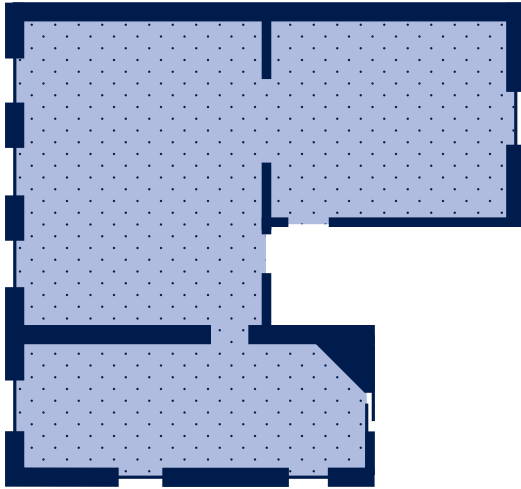
Windows — 4 floor to ceiling windows and one normal window. All windows are fitted with security locks and screen blinds

Mobility Access — Yes

Lift Access from art storage — 1.4m (w) × 1.1m (l) × 2.1m (h)

GALLERY 3

1 Cromwell Place, Second Floor



Dimensions — 9.8m (w) × 10.9m (l) × 3.3m (h)

Total Area — 686 sq ft / 64m²

Loading — 2.75 kN/m²

Wall material — Plywood

Wall colour — Neutral

Floor finish — Hardwood timber floor

Height of doors — 2.2m clear opening

Windows — 5 large windows. All windows are fitted with security locks and screen blinds

Mobility Access — Yes

Lift Access from art storage — 1.4m (w) × 1.1m (l) × 2.1m (h)

GALLERY 4

2 Cromwell Place, Ground Floor



Dimensions — 4.8m (w) × 10.9m (l) × 3.6m (h)

Total Area — 538 sq ft / 50m²

Loading — 2.75 kN/m²

Wall material — Plywood

Wall colour — Neutral

Floor finish — Hardwood timber floor

Height of doors — 2.2m clear opening

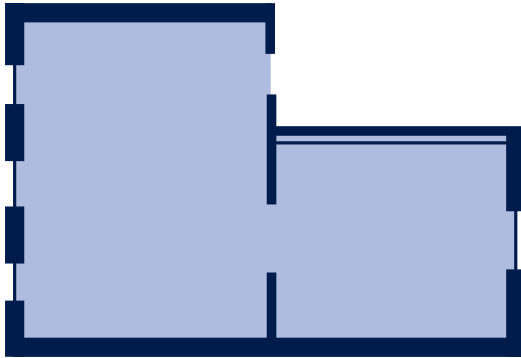
Windows — 3 large windows. All windows are fitted with security locks and screen blinds

Mobility Access — Yes

Lift Access from art storage — 1.6m (w) × 2.65m (h) × 2.1m (h)

GALLERY 5

2 Cromwell Place, First Floor



Dimensions — 6.8m (w) × 10.9m (l) × 3.6m (h)

Total Area — 625 sq ft / 58m²

Loading — 2.75 kN/m²

Wall material — Plywood

Wall colour — Neutral

Floor finish — Hardwood timber floor

Height of doors — 2.2m clear opening

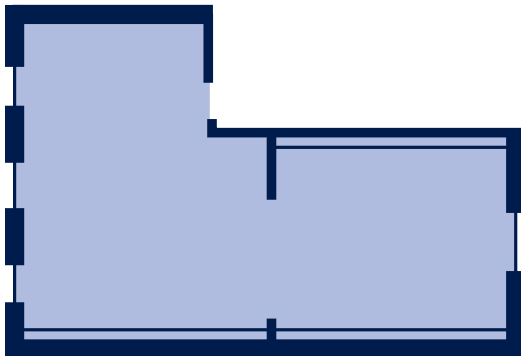
Windows — 4 large windows. All windows are fitted with security locks and screen blinds

Mobility Access — No

Lift Access from art storage — No

GALLERY 6

2 Cromwell Place, Second Floor



Dimensions — 6.8m (w) × 10.9m (l) × 3.3m (h)

Total Area — 611 sq ft / 57m²

Loading — 2.75 kN/m²

Wall material — Plywood

Wall colour — Neutral

Floor finish — Hardwood timber floor

Height of doors — 2.2m clear opening

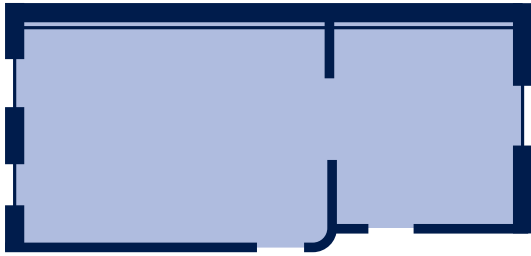
Windows — 4 large windows. All windows are fitted with security locks and screen blinds

Mobility Access — No

Lift Access from art storage — No

GALLERY 7

3 Cromwell Place, Ground Floor



Dimensions — 4.8m (w) × 10.9m (l) × 3.6m (h)

Total Area — 516 sq ft / 48m²

Loading — 2.75 kN/m²

Wall material — Plywood

Wall colour — Neutral

Floor finish — Hardwood timber floor

Height of doors — 2.2m clear opening

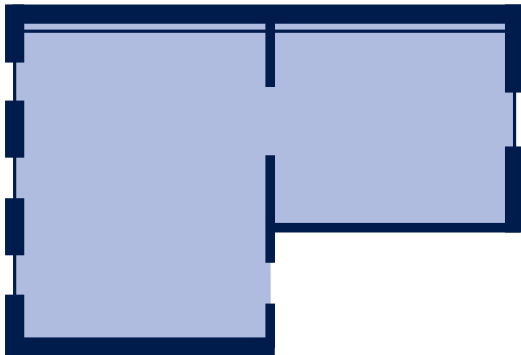
Windows — 3 large windows. All windows are fitted with security locks and screen blinds

Mobility Access — Yes

Lift Access from art storage — 1.6m (w) × 2.65m (h) × 2.1m (h)

GALLERY 8

3 Cromwell Place, First Floor



Dimensions — 6.8m (w) × 10.9m (l) × 3.6m (h)

Total Area — 635 sq ft / 59m²

Loading — 2.75 kN/m²

Wall material — Plywood

Wall colour — Neutral

Floor finish — Hardwood timber floor

Height of doors — 2.2m clear opening

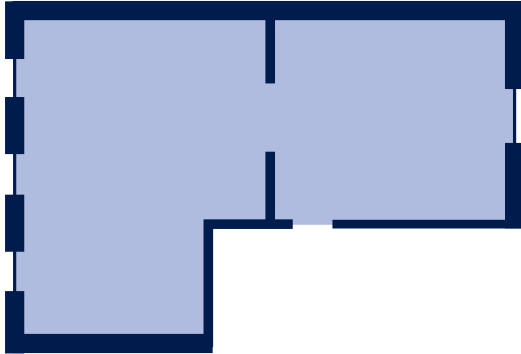
Windows — 4 large windows. All windows are fitted with security locks and screen blinds

Mobility Access — No

Lift Access from art storage — No

GALLERY 9

3 Cromwell Place, Second Floor



Dimensions — 6.8m (w) × 10.9m (l) × 3.3m (h)

Total Area — 600 sq ft / 56m²

Loading — 2.75 kN/m²

Wall material — Plywood

Wall colour — Neutral

Floor finish — Hardwood timber floor

Height of doors — 2.2m clear opening

Windows — 4 large windows. All windows are fitted with security locks and screen blinds

Mobility Access — No

Lift Access from art storage — No

GALLERY 10

4 Cromwell Place, Ground Floor



Dimensions — 4.8m (w) × 5.4m (l) × 3.6m (h)

Total Area — 280 sq ft / 26m²

Loading — 2.75 kN/m²

Wall material — Plywood

Wall colour — Neutral

Floor finish — Hardwood timber floor

Height of doors — 2.2m clear opening

Windows — 2 large windows. All windows are fitted with security locks and screen blinds

Mobility Access — Yes

Lift Access from art storage — 1.6m (w) × 2.65m (l) × 2.1m (h)

GALLERY 11

4 Cromwell Place, Ground Floor



Dimensions — 6.7m (w) × 10.6m (l) × 3.6m (h)

Total Area — 818 sq ft / 76m²

Loading — 2.75 kN/m²

Wall material — Plywood

Wall colour — Neutral

Floor finish — Hardwood timber floor

Height of doors — 2.2m clear opening

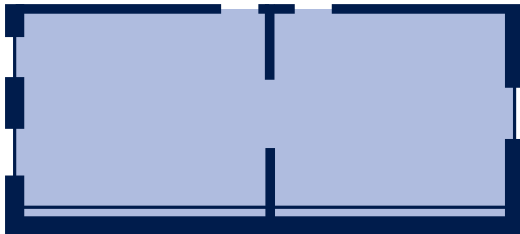
Windows — 4 large windows. All windows are fitted with security locks and screen blinds

Mobility Access — Yes

Lift Access from art storage — 1.6m (w) × 2.65m (l) × 2.1m (h)

GALLERY 12

4 Cromwell Place, Second Floor



Dimensions — 4.4m (w) × 10.42m (l) × 3.3m (h)

Total Area — 495 sq ft / 46m²

Loading — 2.75 kN/m²

Wall material — Plywood

Wall colour — Neutral

Floor finish — Hardwood timber floor

Height of doors — 2.2m clear opening

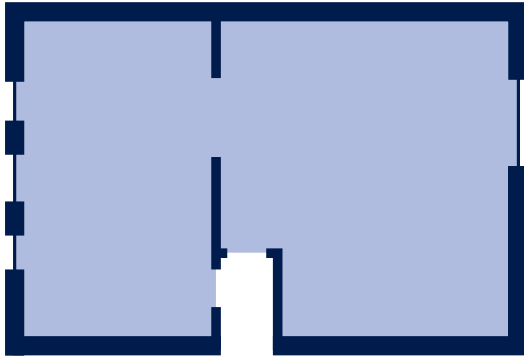
Windows — 3 large windows. All windows are fitted with security locks and screen blinds

Mobility Access — Yes, but with two small steps

Lift Access from art storage — 1.6m (w) × 2.65m (l) × 2.1m (h) with two small steps

GALLERY 13

4 Cromwell Place, Second Floor



Dimensions — 6.8m (w) × 10.9m (l) × 3.6m (h)

Total Area — 753 sq ft / 70m²

Loading — 2.75 kN/m²

Wall material — Plywood

Wall colour — Neutral

Floor finish — Hardwood timber floor

Height of doors — 2.2m clear opening

Windows — 4 large windows. All windows are fitted with security locks and screen blinds

Mobility Access — No

Lift Access from art storage — No

GALLERY 14 (AS OF MAY 2020)

5 Cromwell Place, Ground Floor



Dimensions — 6.8m (w) × 10.5m (l) × 3.6m (h)

Total Area — 776 sq ft / 72m²

Loading — 2.75 kN/m²

Wall material — Plywood

Wall colour — Neutral

Floor finish — Hardwood timber floor

Height of doors — 2.2m clear opening

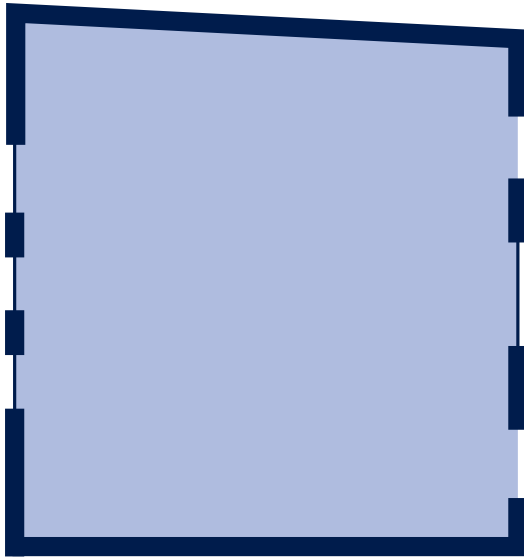
Windows — 4 large windows. All windows are fitted with security locks and screen blinds

Mobility Access — No

Lift Access from art storage — No

GALLERY 15 (AS OF MAY 2020)

5 Cromwell Place, First Floor



Dimensions — 10.6m (w) × 10.6m (l) × 5.5m - 7.4m (h)

Total Area — 1195 sq ft / 111m²

Loading — 2.75 kN/m²

Wall material — Plywood

Wall colour — Neutral

Floor finish — Hardwood timber floor

Height of doors — 2.2m clear opening

Windows — 3 floor to ceiling windows and one of the largest Georgian windows in the UK. All windows are fitted with security locks and screen blinds

Mobility Access — Yes

Lift Access from art storage — 1.6m (w) × 2.65m (l) × 2.1m (h)

OFFICE A

1 Cromwell Place, Third Floor



Dimensions — 5.32m (w) × 7.60m/2.715m (l) × 2.65m (h)
Total Area — 312sq ft / 29m²
Loading — 2.75 kn/m²
Finishes — Basic Shell Scheme
Lift access — Yes

OFFICE C

1 Cromwell Place, Third Floor



Dimensions — 4.35m (w) × 5.35m (l) × 2.65m (l)
Total Area — 247.5 sq ft / 23m²
Loading — 2.75 kn/m²
Finishes — Basic Shell Scheme
Lift access — Yes

OFFICE B

1 Cromwell Place, Third Floor



Dimensions — 4.35m (w) × 5.35m (l) × 2.65m (l)
Total Area — 247.5 sq ft / 23m²
Loading — 2.75 kn/m²
Finishes — Basic Shell Scheme
Lift access — Yes

OFFICE D

1 Cromwell Place, Fourth Floor



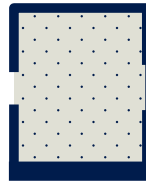
Dimensions — 3.25m (w) × 2.99m (l) × 2.46m (h)
Total Area — 97 sq ft / 9m²
Loading — 2.75 kn/m²
Finishes — Basic Shell Scheme
Lift access — No

OFFICE E
1 Cromwell Place, Fourth Floor



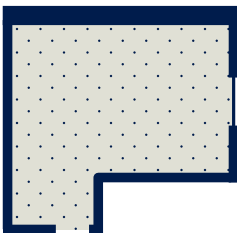
Dimensions — 4.37m (w) × 4.79m (l) × 2.46m (h)
Total Area — 183 sq ft / 17m²
Loading — 2.75 kn/m²
Finishes — Basic Shell Scheme
Lift access — No

OFFICE G
1 Cromwell Place, Fourth Floor



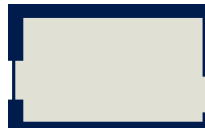
Dimensions — 3.25m (w) × 2.90m (l) × 2.46m (h)
Total Area — 97.5 sq ft / 9m²
Loading — 2.75 kn/m²
Finishes — Basic Shell Scheme
Lift access — No

OFFICE F
1 Cromwell Place, Fourth Floor



Dimensions — 4.37m (w) × 4.79m (l) × 2.46m (h)
Total Area — 183 sq ft / 17m²
Loading — 2.75 kn/m²
Finishes — Basic Shell Scheme
Lift access — No

OFFICE H
2 Cromwell Place, Third Floor



Dimensions — 2.17m (w) × 4.25m (l) × 2.64m (h)
Total Area — 97.5 sq ft / 9m²
Loading — 2.75 kn/m²
Finishes — Basic Shell Scheme
Lift access — No

OFFICE I

2 Cromwell Place, Third Floor



Dimensions — 4.48m (w) × 5.55m (l) × 2.64m (h)
Total Area — 269.5 sq ft / 25m²
Loading — 2.75 kn/m²
Finishes — Basic Shell Scheme
Lift access — No

OFFICE K

2 Cromwell Place, Fourth Floor



Dimensions — 3.32m (w) × 3.53m (l) × 2.46m (h)
Total Area — 118.5 sq ft / 11m²
Loading — 2.75 kn/m²
Finishes — Basic Shell Scheme
Lift access — No

OFFICE J

2 Cromwell Place, Third Floor



Dimensions — 4.52m (w) × 5.14m (l) × 2.64m (h)
Total Area — 247.5 sq ft / 23m²
Loading — 2.75 kn/m²
Finishes — Basic Shell Scheme
Lift access — No

OFFICE L

2 Cromwell Place, Fourth Floor



Dimensions — 4.63m (w) × 4.97m (l) × 2.46m (h)
Total Area — 194.5 sq ft / 18m²
Loading — 2.75 kn/m²
Finishes — Basic Shell Scheme
Lift access — No

OFFICE M
2 Cromwell Place, Fourth Floor



Dimensions — 4.61m (w) × 4.51m (l) × 2.46m (h)
Total Area — 226 sq ft / 21m²
Loading — 2.75 kn/m²
Finishes — Basic Shell Scheme
Lift access — No

OFFICE O
3 Cromwell Place, Third Floor



Dimensions — 6.86m (w) × 5.55m (l) × 2.47m (h)
Total Area — 377.5 sq ft / 35m²
Loading — 2.75 kn/m²
Finishes — Basic Shell Scheme
Lift access — No

OFFICE N
2 Cromwell Place, Fourth Floor



Dimensions — 3.40m (w) × 2.81m (l) × 2.46m (h)
Total Area — 97.5 sq ft / 9m²
Loading — 2.75 kn/m²
Finishes — Basic Shell Scheme
Lift access — No

OFFICE P
3 Cromwell Place, Third Floor



Dimensions — 4.50m (w) × 5.13m (l) × 2.47m (h)
Total Area — 248.5 sq ft / 23m²
Loading — 2.75 kn/m²
Finishes — Basic Shell Scheme
Lift access — No

OFFICE Q
3 Cromwell Place, Fourth Floor



Dimensions — 2.31m (w) × 2.81m (l) × 2.75m (h)
Total Area — 70 sq ft / 6.5m²
Loading — 2.75 kn/m²
Finishes — Basic Shell Scheme
Lift access — No

OFFICE S
3 Cromwell Place, Fourth Floor



Dimensions — 4.41m (w) × 3.43m (l) × 2.75m (h)
Total Area — 161.5 sq ft / 15m²
Loading — 2.75 kn/m²
Finishes — Basic Shell Scheme
Lift access — No

OFFICE R
3 Cromwell Place, Fourth Floor



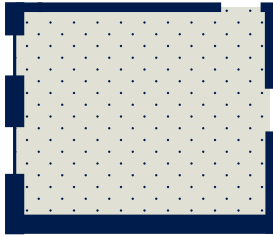
Dimensions — 4.4m (w) × 5m (l) × 2.75m (h)
Total Area — 237 sq ft / 22m²
Loading — 2.75 kn/m²
Finishes — Basic Shell Scheme
Lift access — No

OFFICE T
4 Cromwell place, Third floor



Dimensions — 2.17m (w) × 4.25m (l) × 2.64m (h)
Total Area — 97 sq ft / 9m²
Loading — 2.75 kn/m²
Finishes — Basic Shell Scheme
Lift access — Yes

OFFICE U
4 Cromwell Place, Third Floor



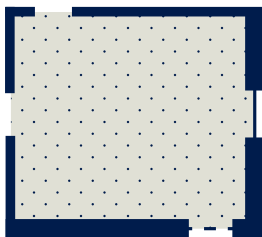
Dimensions — 4.45m (w) × 5.55m (l) × 2.64m (h)
Total Area — 269 sq ft / 25m²
Loading — 2.75 kn/m²
Finishes — Basic Shell Scheme
Lift access — Yes

OFFICE W
4 Cromwell Place, Fourth Floor



Dimensions — 4.5m (w) × 5.16m (l) × 2.24m (h)
Total Area — 248 sq ft / 23m²
Loading — 2.75 kn/m²
Finishes — Basic Shell Scheme
Lift access — Yes

OFFICE V
4 Cromwell place, Third floor



Dimensions — 4.45m (w) × 5.15m (l) × 2.64m (h)
Total Area — 248 sq ft / 23m²
Loading — 2.75 kn/m²
Finishes — Basic Shell Scheme
Lift access — Yes

OFFICE X
4 Cromwell Place, Fourth Floor



Dimensions — 4.50m (w) × 5.12m (l) × 2.24m (h)
Total Area — 248 sq ft / 23m²
Loading — 2.75 kn/m²
Finishes — Basic Shell Scheme
Lift access — Yes

OFFICE Y
4 Cromwell Place, Fourth Floor



Dimensions — 2.17m (w) × 4.25m (l) × 2.24m (h)

Total Area — 97 sq ft / 9m²

Loading — 2.75 kn/m²

Finishes — Basic Shell Scheme

Lift access — Yes

